



**REGIONAL SPECIALISED METEOROLOGICAL CENTRE-TROPICAL CYCLONES, NEW DELHI TROPICAL  
SPECIAL TROPICAL WEATHER OUTLOOK**

---

**DEMS-RSMC TROPICAL CYCLONES NEW DELHI DATED 04.10.2021**

**SPECIAL TROPICAL WEATHER OUTLOOK FOR NORTH INDIAN OCEAN (THE BAY OF BENGAL AND ARABIAN SEA) VALID FOR NEXT 120 HOURS ISSUED AT 1400 UTC OF 04.10.2021 BASED ON 1200 UTC OF 04.10.2021.**

**SUB: DEPRESSION (REMNANT OF CYCLONIC STORM SHAHEEN) WEAKENED INTO WELL MARKED LOW PRESSURE AREA OVER NORTH OMAN AND ADJOINING UNITED ARAB EMIRATES**

THE DEPRESSION OVER NORTH OMAN AND ADJOINING UNITED ARAB EMIRATES (UAE) MOVED WEST-SOUTHWESTWARDS AND WEAKENED INTO A WELL MARKED LOW PRESSURE AREA OVER THE SAME REGION AT 1200 UTC OF TODAY, THE 4<sup>TH</sup> OCTOBER, 2021.

IT IS VERY LIKELY TO MOVE WEST-SOUTHWESTWARDS AND WEAKEN INTO A LOW PRESSURE AREA DURING NEXT 06 HOURS.

**THIS IS THE LAST BULLETIN IN ASSOCIATION WITH THIS SYSTEM. HOWEVER, REGULAR TROPICAL WEATHER OUTLOOK WILL BE RESUMED BY RSMC NEW DELHI FROM TOMORROW.**

**(SUNITHA DEVI S.)  
SCIENTIST-F, RSMC, NEW DELHI**



## OBSERVED TRACK OF SEVERE CYCLONIC STORM "SHAHEEN" OVER THE ARABIAN SEA DURING 30<sup>TH</sup> SEPTEMBER- 04<sup>TH</sup> OCTOBER, 2021

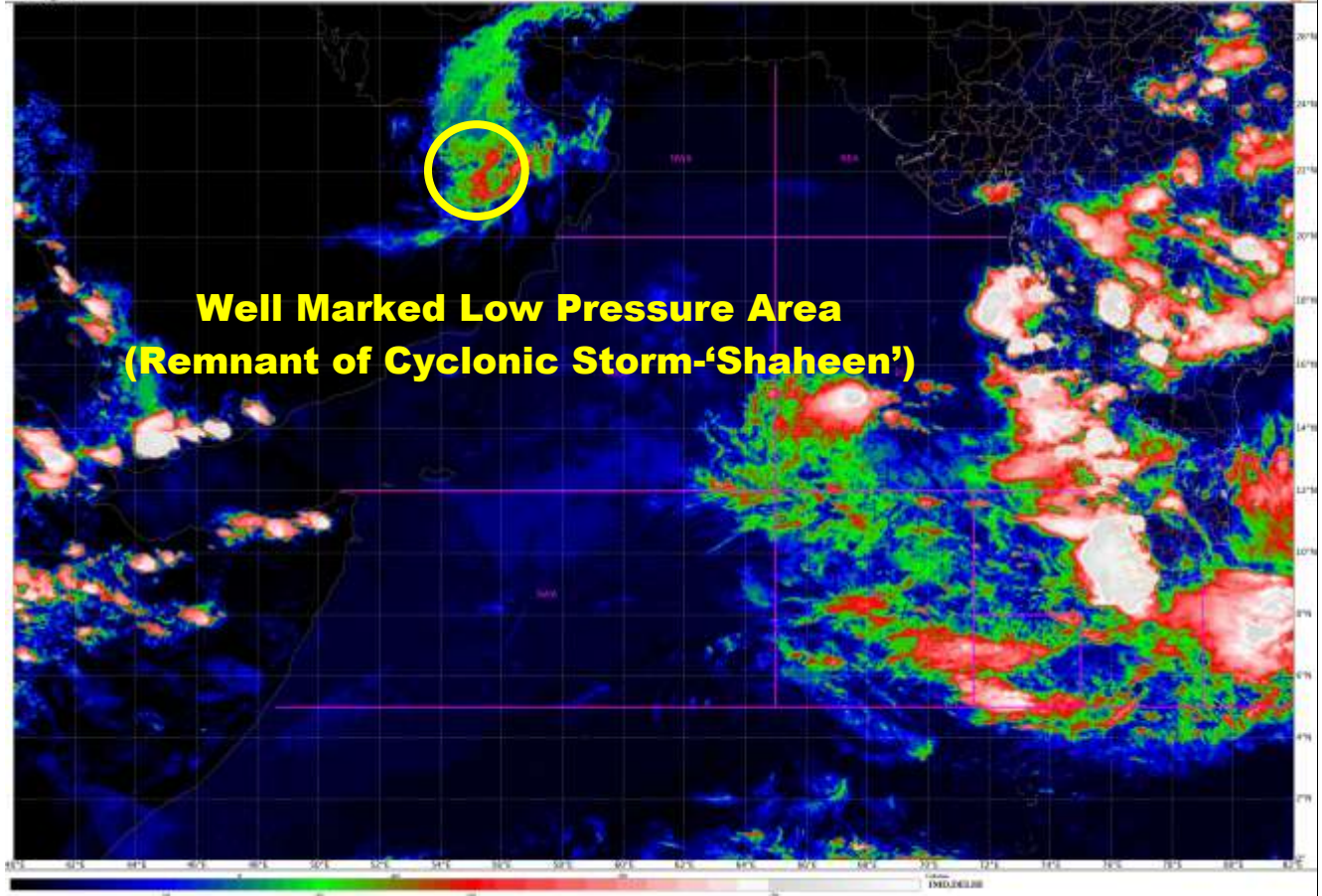


**DATE/TIME IN UTC**  
**IST=UTC + 0530**  
**L: LOW PRESSURE AREA**  
**WML: WELL MARKED LOW PRESSURE AREA**  
**D: DEPRESSION (17-27 KT)**  
**DD: DEEP DEPRESSION (28-33 KT)**  
**CS: CYCLONIC STORM (34-47 KT)**  
**SCS: SEVERE CYCLONIC STORM (48-63KT)**  
**VSCS: VERY SEVERE CYCLONIC STORM (64-89 KT)**  
**ESCS: EXTREMELY SEVERE CYCLONIC STORM (90-119 KT)**  
**SuCS: SUPER CYCLONIC STORM ( $\geq$  120 KT)**

- LESS THAN 34 KT
- 34-47 KT
- $\geq$  48 KT
- OBSERVED TRACK
- FORECAST TRACK
- CONE OF UNCERTAINTY

SAT : INSAT3DR1 DHD  
150, 120, 100, 80, 60, 40, 20, 0, -20, -40, -60, -80, -100, -120, -140, -160, -180  
ARABIAN SEA

04-10-2021/1245 to 1310 GMT  
04-10-2021/1855 to 1920 IST



PROBABILITY OF CYCLOGENESIS (FORMATION OF DEPRESSION):NIL: 0%, LOW: 1-25%, FAIR: 26-50%, MODERATE: 51-75% AND HIGH: 76-100%  
This is a guidance Bulletin for the WMO/ESCAP Panel Member countries,. Please visit respective National websites for Country specific Bulletins